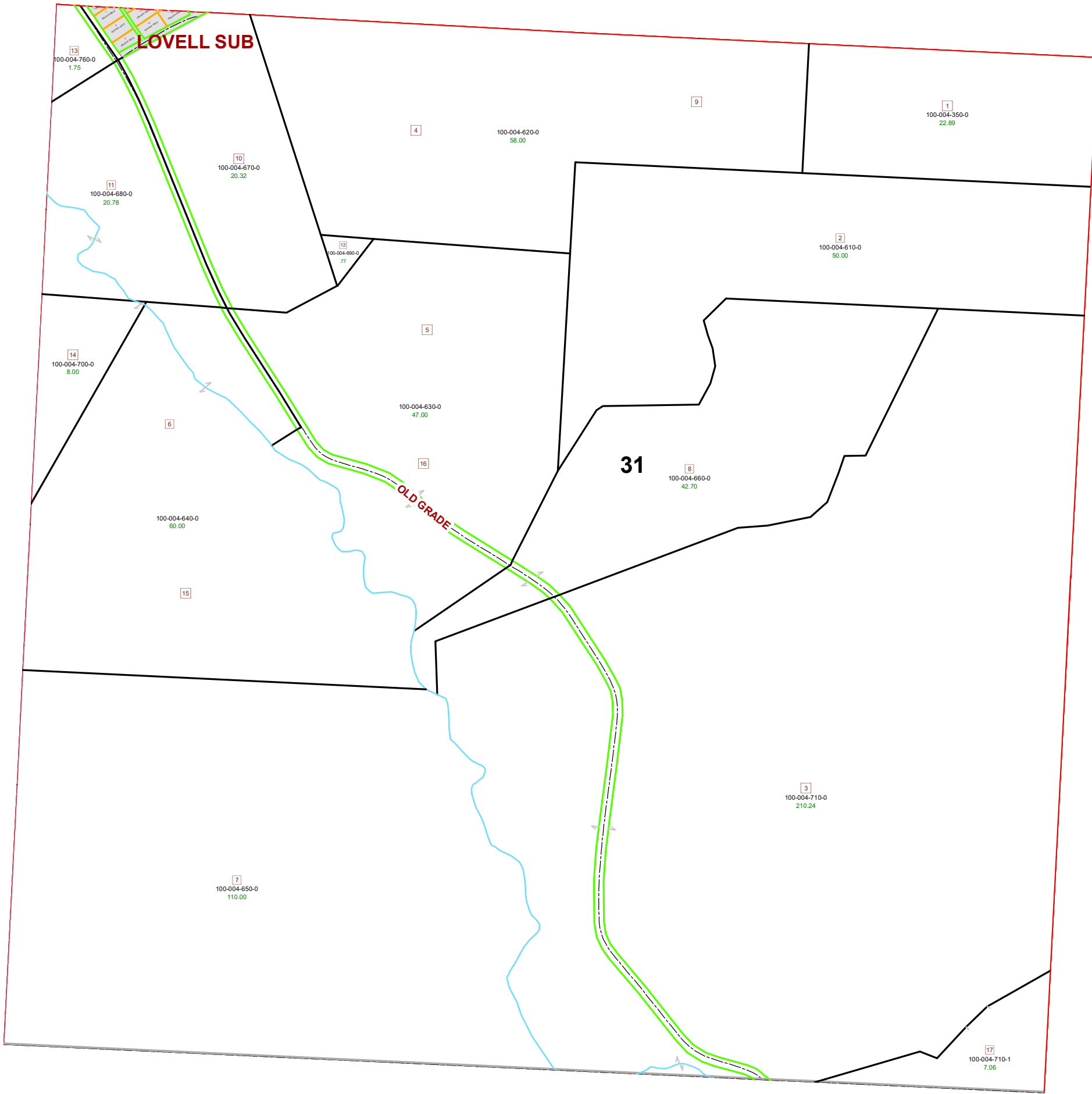
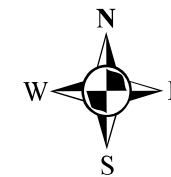


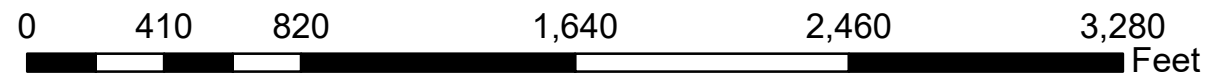
MARION TOWNSHIP SECTION 31 R12 TWP 8 MORGAN COUNTY, OH



PIN	Owner	VOL	PAGE	LegalDescr	Acres
100-004-350-0	JEFFERS' TREE FARM LLC	OR145	430	R12 T08 S31 SD 1 E	22.893
100-004-760-0	LOWE BETTY M	OR222	2062	R12 T08 S31 SD 13	1.75
100-004-650-0	LOWE BETTY M	OR222	2062	R12 T08 S31 SD 7	110
100-004-640-0	LOWE BETTY M	OR222	2062	R12 T08 S31 SD 6-1	60
100-004-660-0	LOWE BETTY M	OR222	2062	R12 T08 S31 SD 8	42.7
100-004-630-0	LOWE BETTY M	OR222	2062	R12 T08 S31 SD 5-1	47
100-004-610-0	LOWE BETTY M	OR222	2062	R12 T08 S31 SD 2	50
100-004-620-0	LOWE BETTY M	OR222	2062	R12 T08 S31 SD 4-9	58
100-004-710-0	LOWE BETTY M & CONSTANCE M LOWE	OR222	2062	R12 T08 S31 SD 3	210.24
100-004-700-0	LOWE BETTY M & CONSTANCE M LOWE	OR222	2062	R12 T08 S31 SD 14	8
100-004-690-0	LOWE BETTY M & CONSTANCE M LOWE	OR222	2062	R12 T08 S31 SD 12	0.77
100-004-680-0	LOWE BETTY M & CONSTANCE M LOWE	OR222	2062	R12 T08 S31 SD 11	20.78
100-004-670-0	LOWE BETTY M & CONSTANCE M LOWE	OR222	2062	R12 T08 S31 SD 10	20.32
100-004-710-1	NAGY EMIL & ADRIENNE	OR209	2018	R12 T08 S31 SD 17	7.06



Boundaries	
----- Hidden	--- ROW
--- Hydro	--- Section
--- Roads	--- Lot
--- County	--- Township
--- Parcel	--- Parcels



Disclaimer: The information that these maps contains is for reference purposes only. Please bring any errors to the attention of the Engineer's Office staff.
Thank you

Source: Morgan County Engineer's Office
Author: Marcia Wolfe
Date: 7/16/2020